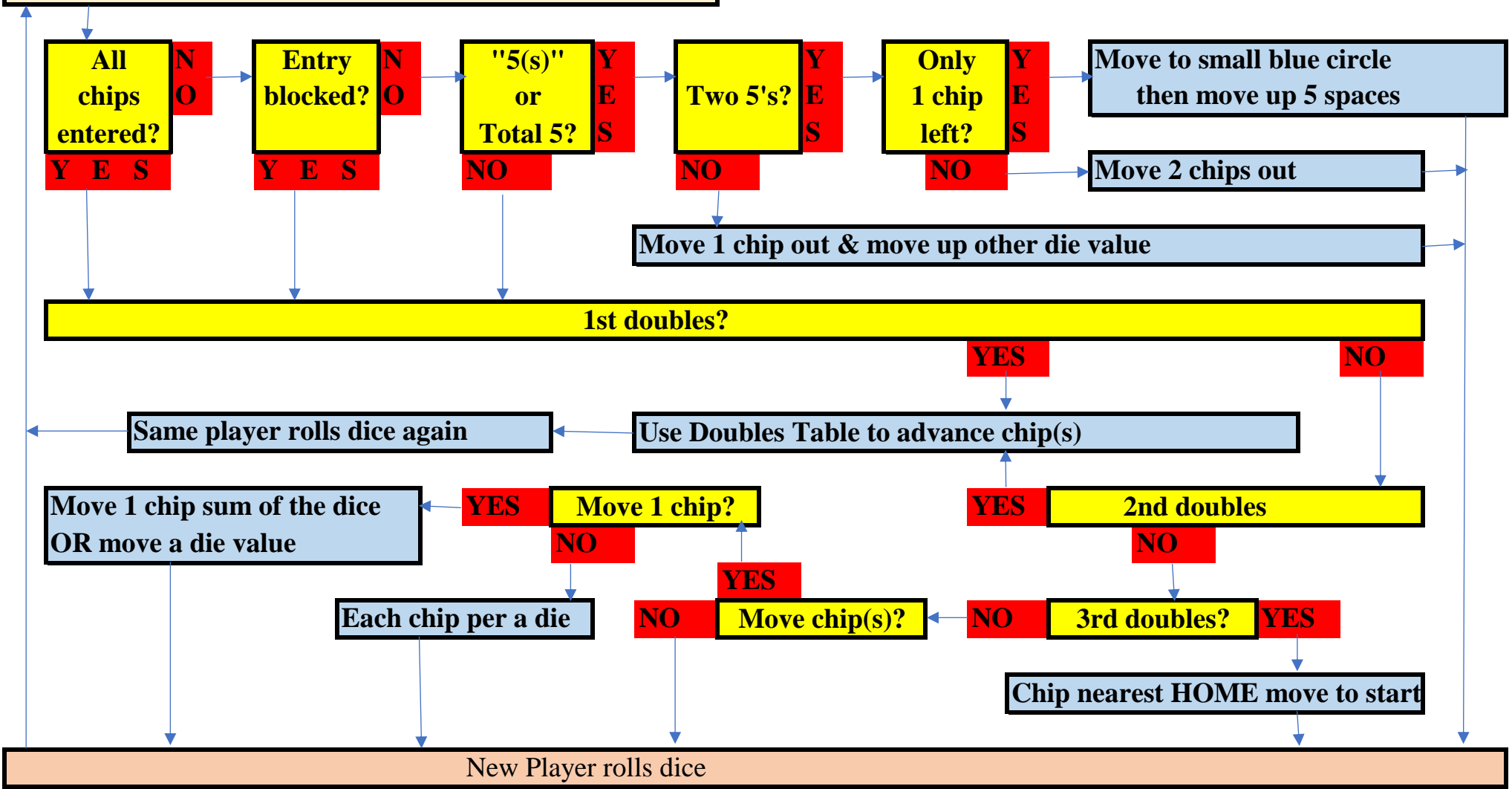


Each player in turn rolls dice (with another turn with doubles)

First player to get 4 chips HOME wins



CHAPTURE: Player's chips are safe in player's **BLUE** & **RED** spaces

NO Player's chip lands on space with opponent's chip? **YES**

Opponent's chip to Start & player gets 20 bonus space moves

NO Chip to Home? **YES** 10 bonus space moves

DOUBLES TABLE (up & low values)	
#chips	Moves (Must use all 14)
4	(6&6&1&1)
3	(6&6&2)or(12&1&1)or(7&6&1)
2	(7 &7)or (3&1)or(8&6)or(12&2)
1	(14)
ELSE Losses turn	

DOUBLES TABLE (up & low values)

#chips Moves (Must use all 14)

4 (6&6&1&1)

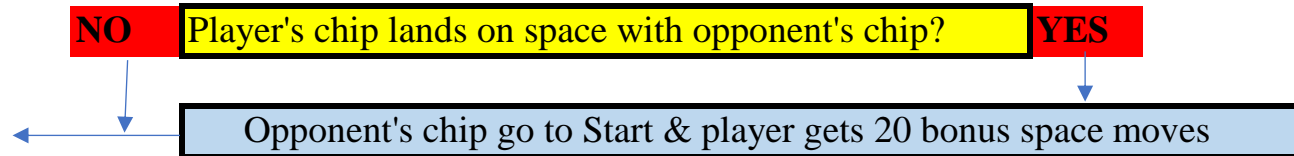
3 (6&6&2)or(12&1&1)or(7&6&1)

2 (7 &7)or (3&1)or(8&6)or(12&2)

1 (14)

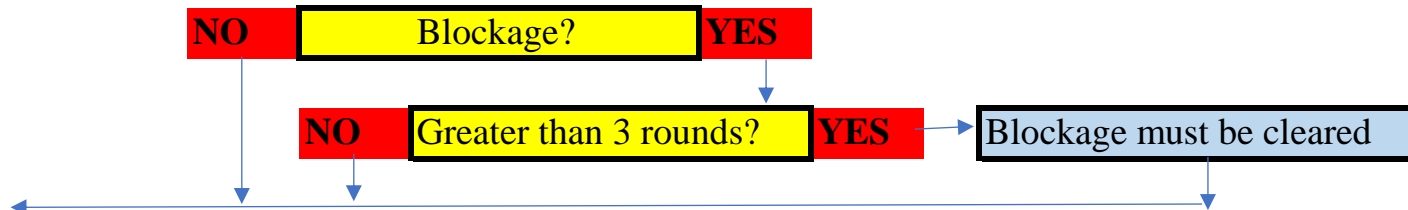
ELSE Losses turn

CAPTURE:



Player's chips are safe from capture in player's **BLUE space** & **RED spaces**

BLOCKADE:



HOME:

